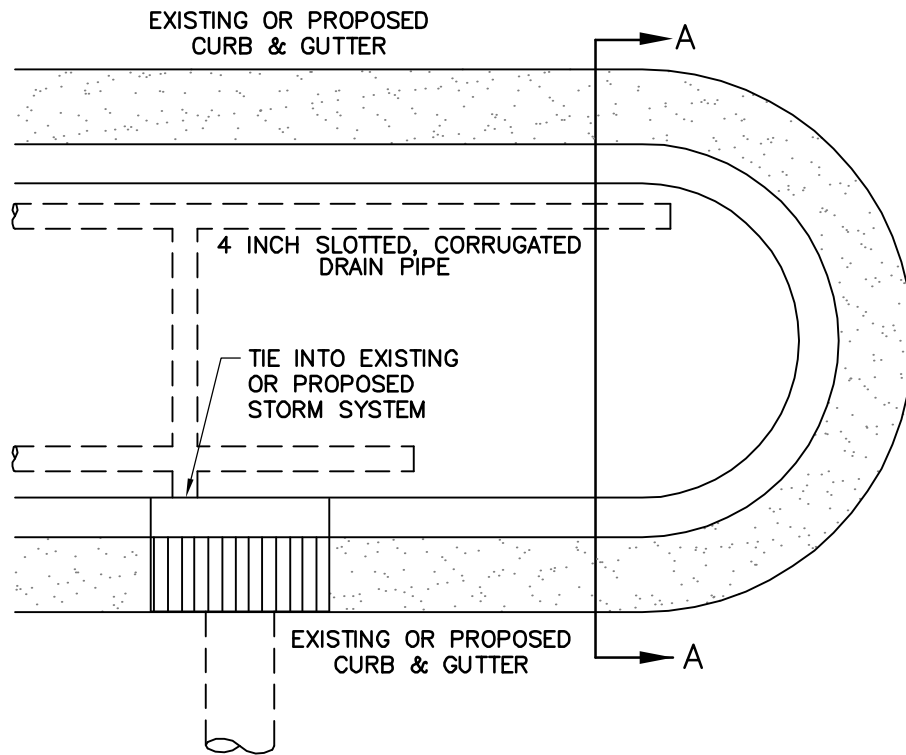


TYPICAL SECTION A-A



PLAN VIEW

NOTES:

1. FABRIC FOR WRAPPING THE DRAINS WITH PERFORATED PIPE AND WASHED STONE SHALL BE THE NON-WOVEN TYPE, MIRAFI 140NL OR APPROVED EQUAL.
2. SUBSURFACE DRAINAGE SHALL BE INSTALLED IN ALL MEDIANS WHERE DRAIN LINES CAN BE TIED INTO EXISTING STORM DRAIN SYSTEM. A 4 INCH PERFORATED, CORRUGATED PVC DRAIN SHALL BE INSTALLED IN EACH MEDIAN AT THE BOTTOM OF THE EXCAVATED AREA. DRAIN SHALL BE COVERED WITH A MINIMUM OF 6 INCHES OF #57 WASHED STONE, THEN WRAPPED WITH THE SPECIFIED NON-WOVEN GEOTEXTILE FABRIC. SPECIAL CARE SHALL BE EXERCISED WHEN FILLING MEDIANS WITH SOIL SO AS NOT TO CRUSH OR DAMAGE THE DRAINAGE SYSTEM OR RECOMPACT THE SOIL.

REVISIONS	
DATE	DESCRIPTION

TOWN OF KNIGHTDALE  
STANDARD DETAILS

STREET MEDIAN EXCAVATION,  
DRAINAGE, AND BACKFILL

STD. NO.

3.12