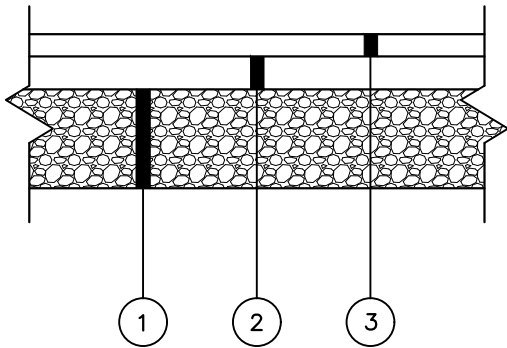


PAVEMENT DESIGN	
3"	S9.5B
4"	I19.0B
12"	ABC



HEAVY VEHICLE PAVEMENT SECTION

- ① BITUMINOUS SURFACE COURSE: 3" S9.5B
- ② INTERMEDIATE COURSE: 4" I19.0B
- ③ BASE COURSE: 12" ABC

SECTION

NOTES:

- 1. TO BE USED ON ANY STREET INTENDED FOR INDUSTRIAL AND HEAVY VEHICLE USE.
- 2. FOLLOW DESIGN DETAIL FOR APPLICABLE CROSS SECTION.

REVISIONS	
DATE	DESCRIPTION

TOWN OF KNIGHTDALE
STANDARD DETAILS

HEAVY VEHICLE PAVEMENT DESIGN

STD. NO.

3.17