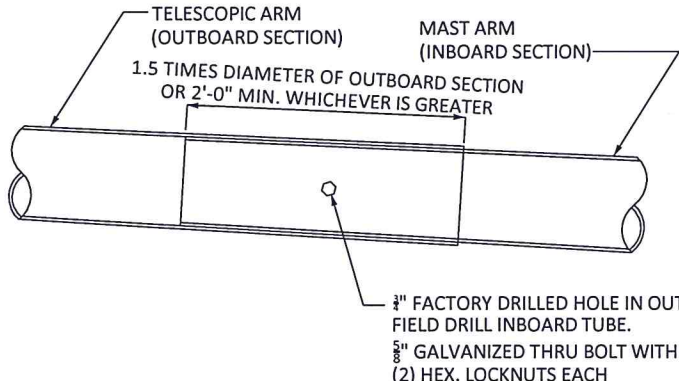


SECTION A-A

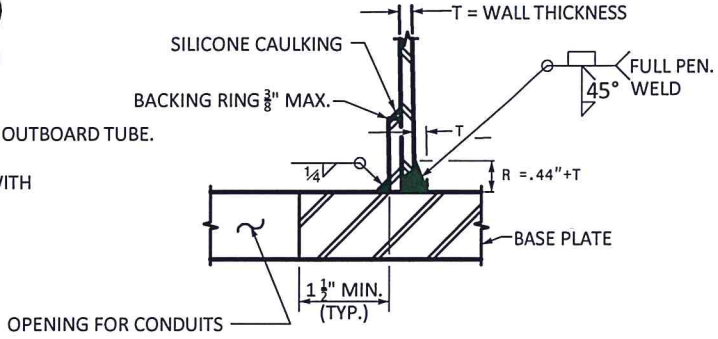
POLE BASE PLATE DETAILS

MAST ARM RADIAL ORIENTATION

MAST ARM POLE



SLIP FIT JOINT DETAIL FOR MAST ARM



SECTION B-B

(POLE ATTACHMENT TO BASE PLATE)

FULL-PENETRATION GROOVE WELD DETAIL

REVISIONS	
DATE	DESCRIPTION

NOTE:
 OPENING IN POLE BASE PLATE SHALL BE EQUAL TO POLE BASE INSIDE DIAMETER MINUS 3 1/2" BUT SHALL NOT BE LESS THAN 8 1/2"